



**BERTELE**  
— METALLTECHNIK —

## Tire Racks and Tire Carts



# BMT Tire Racks

**High quality tire racks - Inexpensive directly from the manufacturer**

The BMT tire racks convince with the proven and ingenious system of pipe holders and 1 inch pipes.

Due to the solid and completely galvanized components, the tire racks are extremely stable and durable. The assembly of the racks is very simple and done in a very short time.

Our range of services starts with small tire storages and ends with large tire rack systems with several 1.000 sets of tires. We would be happy to draw up a plan for you using our 3D CAD system for optimal use of your available space.

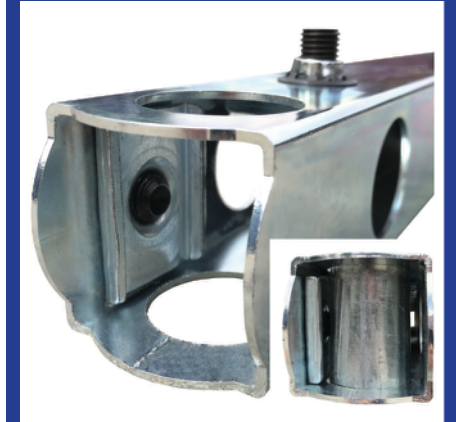
Quality - Made in Germany



Gentle tire storage



Extremely massive construction



Simple assembly due clamping system



Infinitely height adjustable



Rack width 2 meters  
- for 2 sets of tires



Modularly expandable

# BMT Tire Racks

- ▶ Load capacity per level
  - Single Rack: 250 kg
  - Double Rack / XL: 500 kg
- ▶ Max. tire diameter of opposite tires
  - Double Rack: 730 mm
  - Double Rack XL: 800 mm
- ▶ Storage capacity with an average tire width of 235 mm
- ▶ Racks from 7 levels on request



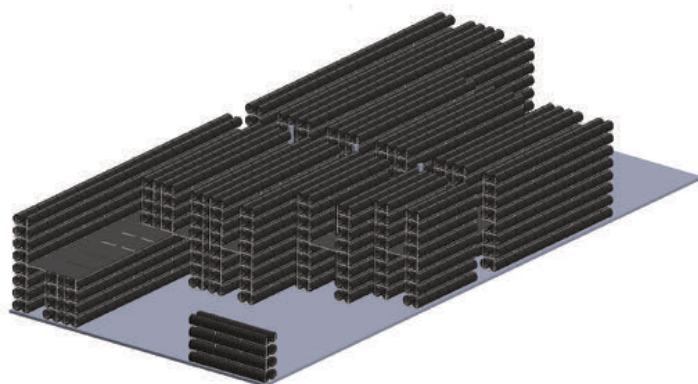
Item no	Product name	Height	Storage capacity	Price
<b>Single Racks (Width: 2000 mm, Depth: 480 mm at 3 levels // 640 mm from 4 levels)</b>				
1	BMT Tire Rack Single - 3 levels - Base Rack	2200 mm	24 Tires	220 €
2	BMT Tire Rack Single - 3 levels - Extension Rack	2200 mm	24 Tires	150 €
3	BMT Tire Rack Single - 4 levels - Base Rack	3000 mm	32 Tires	300 €
4	BMT Tire Rack Single - 4 levels - Extension Rack	3000 mm	32 Tires	210 €
61	BMT Tire Rack Single - 5 levels - Base Rack	3800 mm	40 Tires	380 €
62	BMT Tire Rack Single - 5 levels - Extension Rack	3800 mm	40 Tires	270 €
63	BMT Tire Rack Single - 6 levels - Base Rack	4600 mm	48 Tires	460 €
64	BMT Tire Rack Single - 6 levels - Extension Rack	4600 mm	48 Tires	320 €
<b>Double Racks (Width: 2000 mm, Depth: 1040 mm)</b>				
5	BMT Tire Rack Double - 3 levels - Base Rack	2200 mm	48 Tires	360 €
6	BMT Tire Rack Double - 3 levels - Extension Rack	2200 mm	48 Tires	260 €
7	BMT Tire Rack Double - 4 levels - Base Rack	3000 mm	64 Tires	480 €
8	BMT Tire Rack Double - 4 levels - Extension Rack	3000 mm	64 Tires	350 €
65	BMT Tire Rack Double - 5 levels - Base Rack	3800 mm	80 Tires	600 €
66	BMT Tire Rack Double - 5 levels - Extension Rack	3800 mm	80 Tires	440 €
67	BMT Tire Rack Double - 6 levels - Base Rack	4600 mm	96 Tires	730 €
68	BMT Tire Rack Double - 6 levels - Extension Rack	4600 mm	96 Tires	530 €
<b>Double Racks XL (Width: 2000 mm, Depth: 1180 mm)</b>				
69	BMT Tire Rack Double XL - 3 levels - Base Rack	2200 mm	48 Tires	390 €
70	BMT Tire Rack Double XL - 3 levels - Extension Rack	2200 mm	48 Tires	280 €
71	BMT Tire Rack Double XL - 4 levels - Base Rack	3000 mm	64 Tires	530 €
72	BMT Tire Rack Double XL - 4 levels - Extension Rack	3000 mm	64 Tires	380 €
73	BMT Tire Rack Double XL - 5 levels - Base Rack	3800 mm	80 Tires	660 €
74	BMT Tire Rack Double XL - 5 levels - Extension Rack	3800 mm	80 Tires	480 €
75	BMT Tire Rack Double XL - 6 levels - Base Rack	4600 mm	96 Tires	800 €
76	BMT Tire Rack Double XL - 6 levels - Extension Rack	4600 mm	96 Tires	570 €

# Tire Rack systems

The stable system of the BMT tire racks is ideally suited for large tire rack systems with a height of up to 9 levels. We offer you the complete package from a single source. Depending on your needs, we can equip your racking system with stairs, elevators, push railings and intermediate floors. Of course, we also offer you on-site assembly.

Tip: As a cost-effective solution for operating the upper floor of a 2-storey racking system, we recommend a push railing in connection with a high-lift truck.

## Planning in 3D using CAD



## Detail of a tire rack system



# Tire Rack systems

The majority of our customers assemble the tire racks themselves. Due to the simple system and the few individual parts, the assembly is done in a very short time.

When planning your tire rack system, we ask you to observe the following practical tips.



	Depth rack (without tires)	Total depth (incl. tire protrusion)
Single Rack	480 mm	730 mm
Double Rack	1040 mm	1460 mm
Double Rack XL	1180 mm	1600 mm

The actual "total depth" depends on the size of your tires. Experience has shown that we recommend that you plan for the values given here.

**Gangway  
900 mm**

For manual operation of the tire storage (e.g. with a tire truck), we recommend that you consider approx. 900 mm as the gangway between the tire racks.

## Tire Truck and Tire Trolley



Our tire trucks and tire trolleys make it easier for you to transport the tires from the vehicle to the tire storage. The tire truck can pick up tires directly from the ground or alternatively a tire trolley (XL version not).



Item no	Product name	Technical specifications	Price
53	Tire Truck universal	LxWxH: 820 x 820 x 1680 mm, Load capacity: 200 kg	360 €
54	Tire Trolley	H: 110 mm, ø: 630 mm, Load capacity: 120 kg	45 €
55	Tire Trolley XL	H: 150 mm, ø: 790 mm, Load capacity: 250 kg	68 €

# BMT Tire Carts

## Stable Tire Carts - Inexpensive directly from the manufacturer

The BMT tire carts are convincing due to their massive construction of an outstanding stability and durability. Thanks to the innovative clamping system, the tire carts are infinitely adjustable in height. High-quality elastic solid rubber castors with ball bearings are installed for convenient and energy-saving transport.

The 3 product lines - BMT Tire Carts Profi, Giant and Basic

### Profi



Premium product for users with high demand

Round pipes: Ø 33,7 mm (1 inch)  
Square pipes: 50x50x2 mm  
Castors: Ø 160 mm

### Giant



Mobile tire storage with high storage capacity

Round pipes: Ø 33,7 mm (1 inch)  
Square pipes: 50x50x2 mm  
Castors: Ø 200 mm

### Basic



Entry-level product for price-conscious users

Round pipes: Ø 26,9 mm (3/4 inch)  
Square pipes: 40x40x2 mm  
Castors: Ø 125 mm



Symbolic image to illustrate the stability (BMT Tire Cart Profi)

Extremely robust construction



Infinitely height adjustable



Elastic solid rubber castors

# BMT Tire Carts

Item no	Product name	WxHxD	Price
<b>Profi</b>			
15	BMT Tire Cart Profi - 2 levels - 16 tires	2100 x 1700 x 640 mm	330 €
16	BMT Tire Cart Profi - 3 levels - 24 tires	2100 x 2200 x 640 mm	420 €
<b>Giant (max. tire diameter of opposite tires &gt;&gt; Giant: 730 mm // Giant XL: 800 mm)</b>			
43	BMT Tire Cart Giant - 2 levels - 32 tires	2150 x 1750 x 1040 mm	480 €
27	BMT Tire Cart Giant - 3 levels - 48 tires	2150 x 2450 x 1040 mm	620 €
28	BMT Tire Cart Giant - 4 levels - 64 tires	2150 x 3250 x 1040 mm	820 €
44	BMT Tire Cart Giant XL - 2 levels - 32 tires	2150 x 1750 x 1180 mm	510 €
45	BMT Tire Cart Giant XL - 3 levels - 48 tires	2150 x 2450 x 1180 mm	670 €
46	BMT Tire Cart Giant XL - 4 levels - 64 tires	2150 x 3250 x 1180 mm	890 €
<b>Basic</b>			
47	BMT Tire Cart Basic - 2 levels - 8 tires	1270 x 1650 x 620 mm	200 €
48	BMT Tire Cart Basic - 2 levels - 12 tires	1620 x 1650 x 620 mm	210 €
49	BMT Tire Cart Basic - 2 levels - 14 tires	1870 x 1650 x 620 mm	220 €
50	BMT Tire Cart Basic - 3 levels - 12 tires	1270 x 2150 x 620 mm	260 €
51	BMT Tire Cart Basic - 3 levels - 18 tires	1620 x 2150 x 620 mm	270 €
52	BMT Tire Cart Basic - 3 levels - 21 tires	1870 x 2150 x 620 mm	280 €

## Profi



## Giant



## Basic



# Orders & Consulting

Please fill out the order form completely and send it by Fax or E-Mail.

Fax: **+49 8226 / 9408121**

E-Mail: **info@berteale-metalltechnik.de**

Item no	Product name	Single price	Quantity

## Billing and shipping address

Company name:

First name, Last name:

Street, house number:

Postcode / ZIP, City:

Phone:

E-Mail:

All prices net plus VAT; price changes reserved

Payment on account with 30 days of payment

Shipping costs depend on the country

## Order online on account

[www.bertele-metalltechnik.de/en/shop](http://www.bertele-metalltechnik.de/en/shop)

## Consulting and Offers

+49 8226 / 9407208

[info@berteale-metalltechnik.de](mailto:info@berteale-metalltechnik.de)

Bertele Metalltechnik GmbH

Mühlbergstraße 21

89346 Bibertal, Germany

Tel.: +49 8226 / 9407208

Mail: [info@berteale-metalltechnik.de](mailto:info@berteale-metalltechnik.de)

Web: [www.bertele-metalltechnik.de/en](http://www.bertele-metalltechnik.de/en)